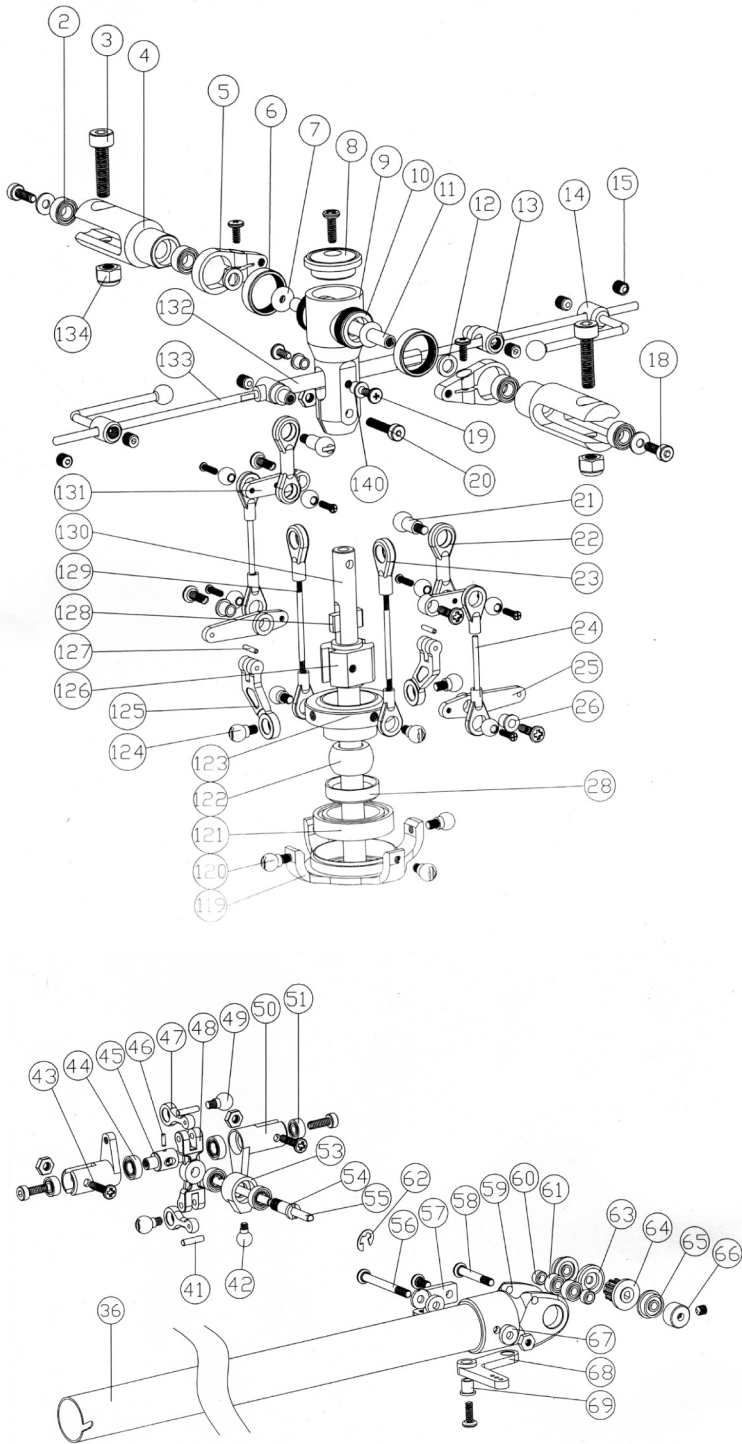


Exploded Diagram for 36#B Upgrade



Part Code	Description	Q'ty	Specification
002	Bearing	4	$\Phi 3 * \Phi 6 * 2.5$
003	Cross Recessed Pan Head Screw	2	M3*10
004	Blade Holder	2	$\Phi 11 * 32.73$
005	Blade Holder Connector	2	
006	Decoration Ring	2	M9* $\Phi 10.5 * 3$
007	Rubber Ring	2	
008	Blade Arrester	1	
009	Rotor Head	1	

010	Rotor Head Transver Shaft	1	
011	Main Blade Shaft	2	$\Phi 3 * \Phi 38.6$
012	Plain Washer	2	$\Phi 3 * \Phi 5 * 0.8$
013	Flybar Fixing Block	2	
014	Flybar Paddle Holder	2	
015	Hexagon Socket Plain Locking Screw	7	M3*3
018	Cross Recessed Pan Head Screw	4	M2*6
019	Cross Recessed Pan Head Screw	2	PM2*4
020	Cross Recessed Pan Head Screw	1	M2*12
021	Steel Ball B	2	M2*S $\Phi 4 * 10.8$
022	Ball Linkage	2	
023	Ball Linkage	2	
024	Short Ball Link Rod	2	
025	Mixer Lever	2	
026	Mixing Copper Sleeve	2	$\Phi 2 * \Phi 3 * 3.3$
028	Swashplate Main Body (Upper)	1	
036	Tail Boom	1	
041	Cylindrical Pin 5	2	$\Phi 1.5 * 7$
042	Steel Ball C	1	M1.4*S $\Phi 4 * 6.46$
043	Cross Recessed Pan Head Screw	2	PM2*10
044	Bearing	2	$\Phi 3 * \Phi 6 * 2$
045	Tail Rotor Connecting Shaft	1	
046	Tail Shaft Fixing Pin	1	
047	Tail Blade Connector	2	
048	Tail Rotor Bellcrank	1	
049	Steel Ball B	2	M2*S $\Phi 4 * 10.8$
050	Aluminum Tail Rotor Connector	2	
051	Bearing	2	$\Phi 3 * \Phi 6 * 2$
053	Tail Shaft Steering Holder	1	
054	Tail Blade Sleeve	1	
055	Tail Shaft	1	
056	Cross Recessed Pan Head Screw	1	M2*20
057	Tail Rod Holder B	1	
058	Cross Recessed Pan Head Screw	1	M2*14
059	Tail Gear Holder	1	
060	Bearing Locating Ring	1	
061	Bearing	2	$\Phi 2 * \Phi 6 * 2.5$
063	Pinion Cover	1	
064	Synchromesh Pulley (10 teeth)	1	
065	Step Bearing	2	$\Phi 3 * \Phi 6 * 2.5$
066	Tail Rod Holder	1	
067	Tail Rod Holder A	2	
068	Rudder Servo Control Arm	1	
069	Control Arm Sleeve	1	
119	Swashplate Base	1	
120	Steel Ball C	4	M2*S $\Phi 4 * 6.9$
121	Bearing	1	$\Phi 12 * \Phi 18 * 4$
122	Swashplate Steel Ball	1	
123	Swashplate Body (Upper)	1	M12*S $\Phi 20 * 8$
124	Steel Ball D	4	M2*S $\Phi 4 * 6.75$
125	L-Shape Bellcrank	2	
126	Shaft Sliding Set	1	$\Phi 5 * \Phi 10 * 10$
127	Mixer Lever Pin	2	$\Phi 1 * 5$
128	Steering Dowel	1	
129	Ball Linkage 1	2	
130	Main Shaft	1	
131	Main Rotor Controlling Rod	2	
132	Flybar Controlling Rod	1	$\Phi 3.5 * 44$
133	Flybar	1	
134	Locking Socket Nut	2	